

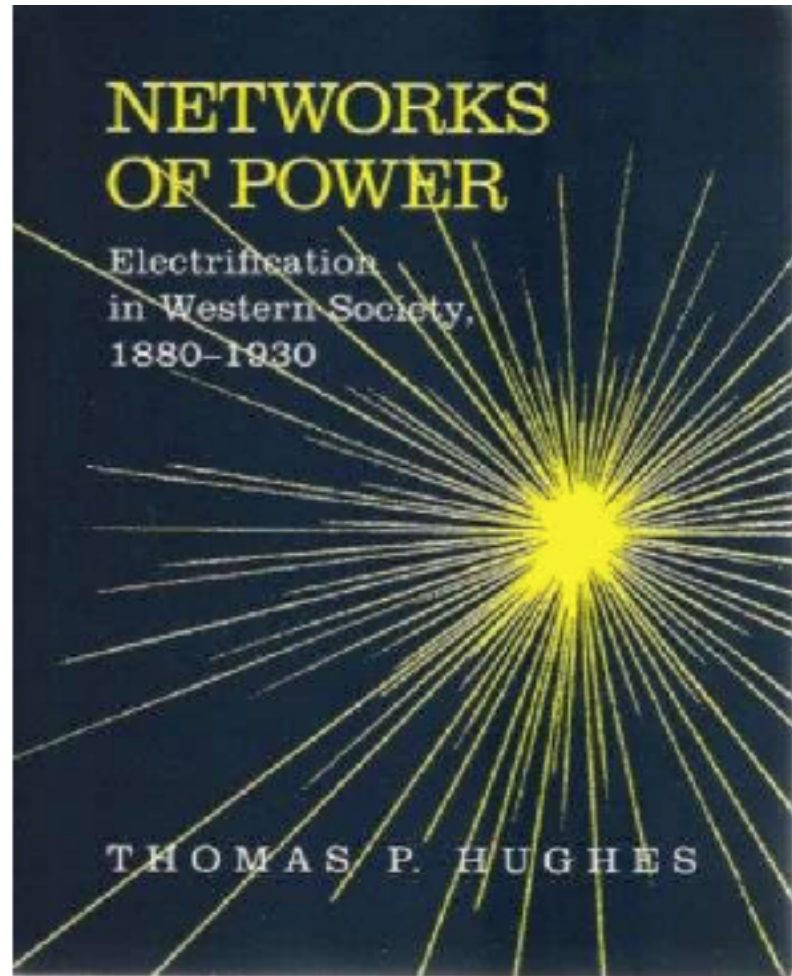


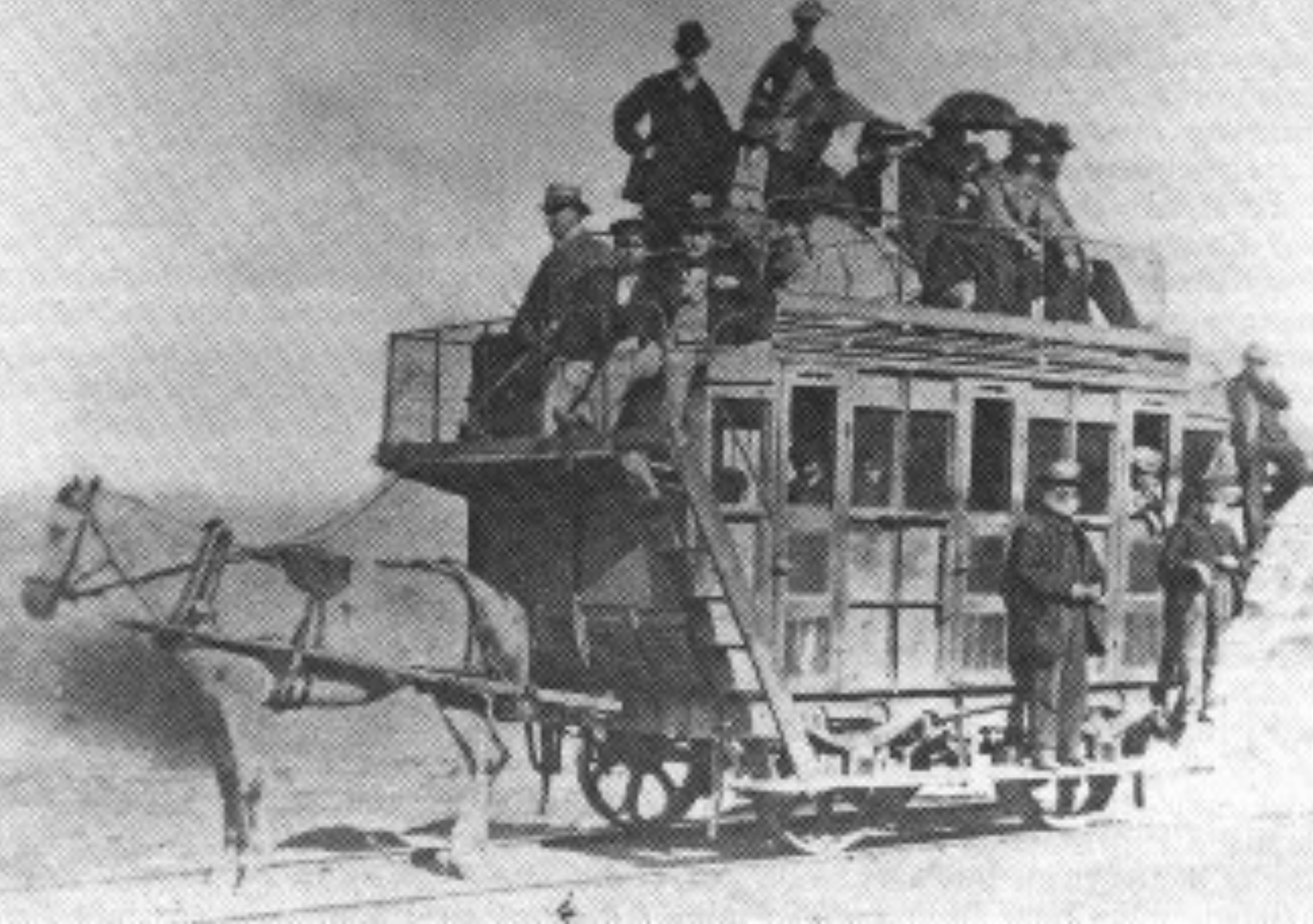
# Technological transitions: Large Technical Systems

Petter Johansson

[pettjoh@kth.se](mailto:pettjoh@kth.se)

# Thomas P. Hughes





First rail bound passenger transport at Oystermouth, England 1807

De viktigare  
stambaneprojekten  
från 1840- och 1850-talen

- von Rosen: stambanetiska förslag till Järnvägsplan 1845
  - förslag av 1855 års Jernvägsnämnd  
(stambanor och sammanbindning linjer)
  - 1845: Ericson: förslag till Jernvägsplan
  - 1855 års Jernvägsnämnds Jernvägsplan
- Även Jernvägsnämnden har en egen plan för stambanor



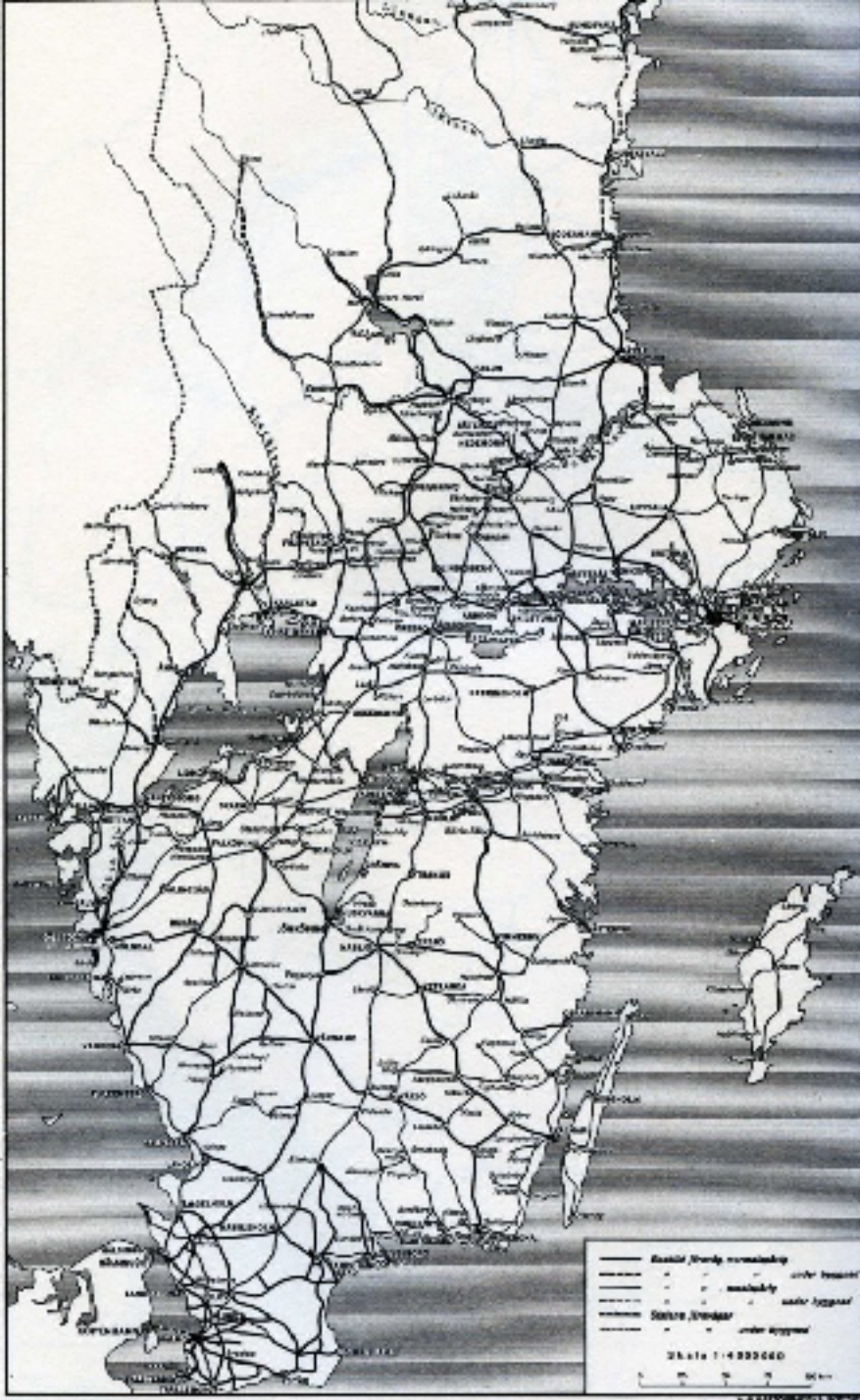
# Planning of the Swedish railway system (1840's & -50's)

- *aligning the  
system*

# Technological momentum also means resistance to change

- Large socio-technical systems seek solutions that are rational from their strive to expand and survive
- LTS are not open to new technological solutions that does not fit in with the current system-culture
- Through their established position of power the mature socio-technical systems can prevent the growth and establishment of new technology





# Swedish railway system 1926

- *technological momentum*



# Lock-in & Path dependence examples



Path dependence means that our Future decisions depend on earlier decisions

In other words: Established technologies, routines and norms (cultures) guide the development and technological trajectories of the current developments.



Bildkälla: <http://dailyscot.com/tackling-fuel-poverty/>

Thank you for listening